

# WHY CHOOSE CAMUS BOILERS?

*Proven Performance.  
Precision Engineering.*



## What Sets Camus Apart:



### High-Efficiency Ratings

Up to 40:1 turndown and 99% thermal efficiency to meet sustainability goals and reduce energy costs.



### Innovative Designs

Compact footprints and flexible venting for easy installation, even in tight mechanical rooms.



### Application Flexibility

Water & fire-tube models in a wide range of sizes and capacities. Fully modulating burners & advanced controls.



### Built to Last

Durable construction and thoughtful design ensure long-term operation with minimal maintenance.

## Pair with Trusted Accessories:



### Security Chimneys

Code-compliant, modular venting built for commercial boiler rooms.

- Positive pressure
- Multi-boiler stacks
- Stainless steel construction

### JJM Alkaline Technologies

Compact condensate neutralizers that protect drains and extend system life.

- Neutralizes acidic condensate
- Easy to install
- Maintenance-friendly design

### Avenger Series I

- Condensing Firetube
- Boiler or Domestic HW
- 1,000,000 - 4,000,000 BTU/hr
- Natural gas or propane
- 25:1 Turndown
- Fully Welded SS HTX & Vessel
- 10-year nonprorated HTX warranty



### Avenger Series II

- Condensing Firetube
- Boiler or Domestic HW
- 5,000,000 & 6,000,000 BTU/hr
- Natural gas
- 40:1 Turndown
- Fully Welded SS HTX & Vessel
- 10-year nonprorated HTX warranty



### Valiant-FT Series II

- Condensing Firetube
- Boiler applications only
- 400,000 - 850,000 BTU/hr
- Natural gas or propane
- 10:1 Turndown
- Floor Mount
- 10-year pro-rated HTX warranty

### Valiant-FT Series I

- Condensing Firetube
- Boiler applications only
- 80,000 - 399,000 BTU/hr
- Natural gas or propane
- 10:1 Turndown
- Wall or Floor Mount
- 10-year pro-rated HTX warranty



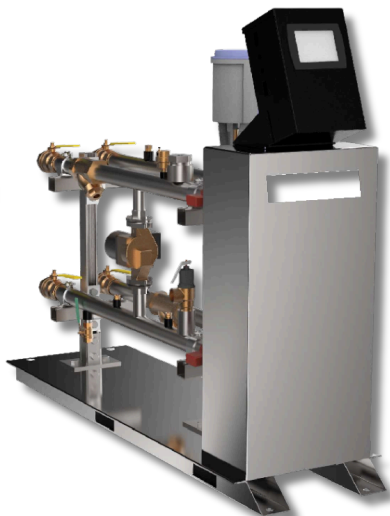
### V-Tech (Tank Style)

- Condensing DHW Waterheater
- 80,000 - 499,000 BTU/hr
- 5:1 turndown
- Stainless steel storage tank
- 60-115 Gallon Tank
- ASME Rated
- Concentric Venting
- 10-year warranty



### DynaFLO (Indirect HTX)

- Indirect HW Heat Exchanger 15 Model Ranges
- Stainless Steel Plate Heat Exchangers - Double or single wall (process or DHW)
- ASME Rated
- Up to 340 GPM of DHW at 60° ΔT
- 4.3" Full Color Controller
- + / - 1°F of setpoint control



### DynaForce

- Condensing Watertube
- 300,000 - 5,000,000 BTU/hr
- Natural gas or propane
- Boiler or Domestic HW
- Stainless Steel Heat Exchanger
- 5:1 Turndown
- 10-year nonprorated HTX warranty

### DynaFlame

- Watertube (Three HTX Variations)
- 500,000 - 6,000,000 BTU/hr
- Natural gas or propane
- Boiler or Domestic HW
- Noncondensing Copper 85% Efficient
- Near Condensing Cu-Ni 88% Efficient
- Fully Condensing SS 95% Efficient

### DynaMax (Floor Mount)

- Condensing Watertube
- Boiler or Domestic HW
- 300,000 - 800,000 BTU/hr
- Extremely Small Footprint
- PVC/CPVC Venting
- 5:1 Turndown
- 12-year pro-rated HTX warranty

### DynaMax (Wall Mount)

- Condensing Watertube
- Boiler or Domestic HW
- 200,000 - 250,000 BTU/hr
- Extremely Small Footprint
- PVC/CPVC Venting
- 5:1 Turndown
- 12-year pro-rated HTX warranty

